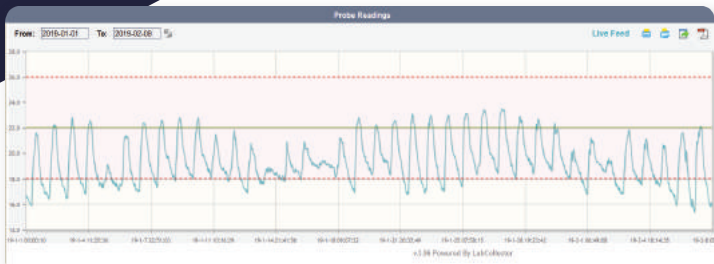


# Data Logger



## Environmental Monitoring System

SMS and E-mail alert!



- Centralize your monitoring in LabCollector.
- Network based application for round-the-clock control of rooms and equipment - temperature, humidity, CO2 and light/dark cycles.
- Temperature log visible for each sensor in the database. Retrieve data for a defined period (quality control). Historical charts available.
- Email and/or SMS alerts when values are outside of defined ranges.
- On-premises or Cloud Installation.
- All kind of sensors possible & ultra low temperature sensors.



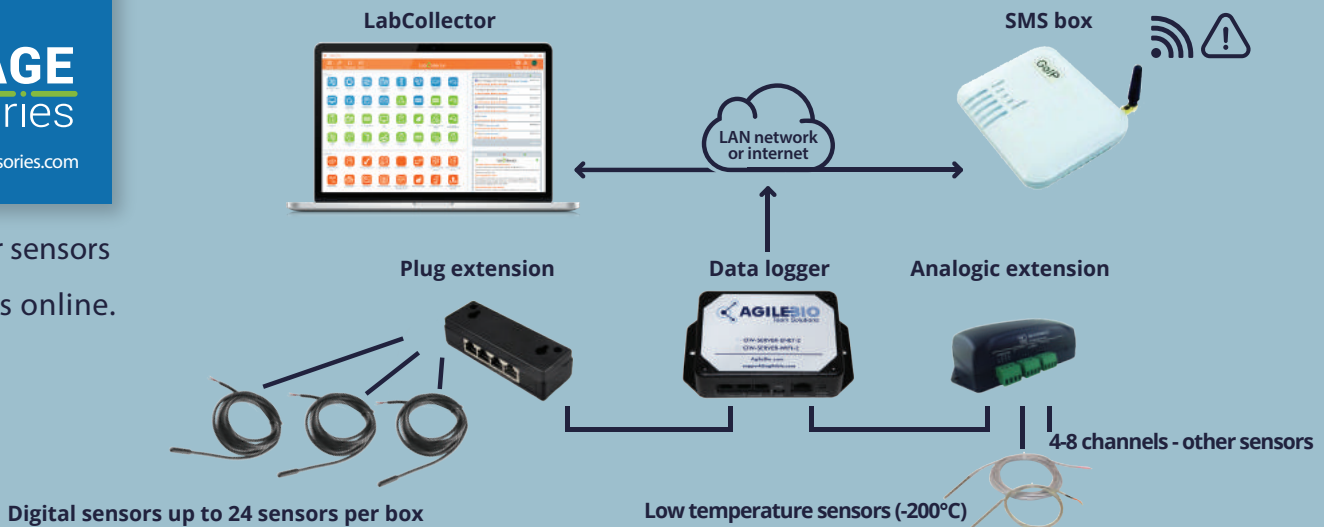


**STORAGE**  
accessories

<https://storage-accessories.com>

# Easy plug and play monitoring system for your lab

Get all your sensors and accessories online.



## Hardware



Data logger to connect your sensors: temperature, humidity, CO2... (Ethernet WIFI)



Analogic extension for 4-20 mA sensors (+200°C)



GSM/SMS box for sending alerts.



RJ45 extension and connectors.



Digital temperature sensors (-55°C/150°C).



Low temperature RTD sensors kit (-200°C/100°C).



Many more types.

The **Data Logger** is a network-based application for round-the-clock control of environmental sensors. It can track sensors such as those for **temperature, humidity, gases, CO2, light, pressure** and switches (for alarm settings) and centralizes them in LabCollector LIMS. Connect several kinds of data logger hardware and sensors to your lab equipment and in relevant areas of your lab environment so that fluctuations in temperature etc. can be followed with the Data Logger add-on. The **Data Logger** add-on for LC allows lab staff to set parameters for each piece of equipment/lab space (expected temperature and tolerance thresholds), to define SMS receivers (using our SMS Gateway extension) and manage email alerts. All alerts are logged for historical purposes and sensor readings can be easily searched for by period using a graphical display.

## Ask for a FREE testing kit\*!

\*To allow testing of this add-on in optimal conditions, we can loan a 30 days free kit (1 Ethernet logger + 1 digital temperature sensor).

